

Brain Layers



Brain

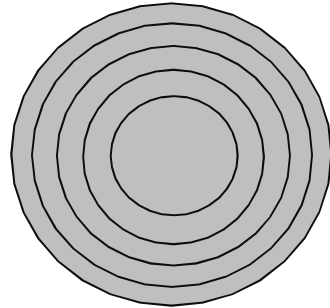
The brain functions as an overdetermined, central relay system of our organism.

Each organ (or parts of an organ depending on germ layer) can be assigned to a specific brain relay.

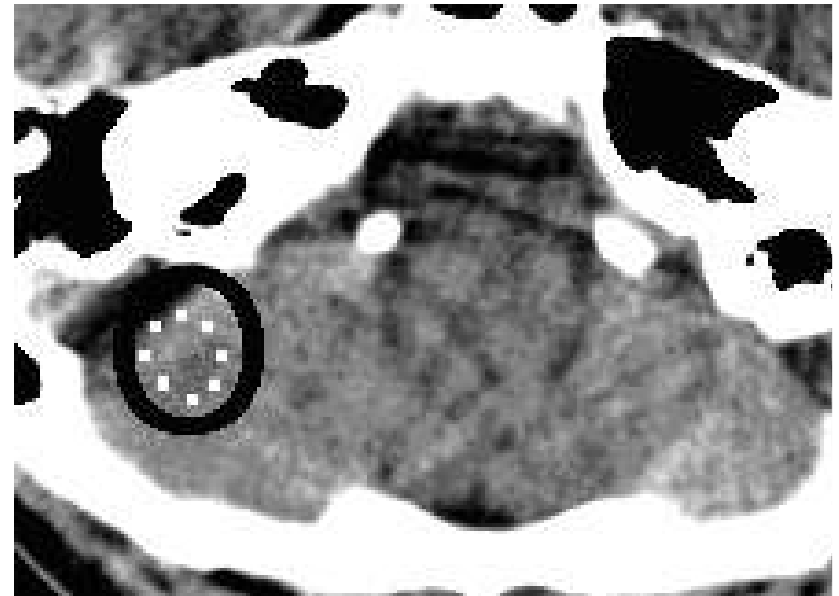
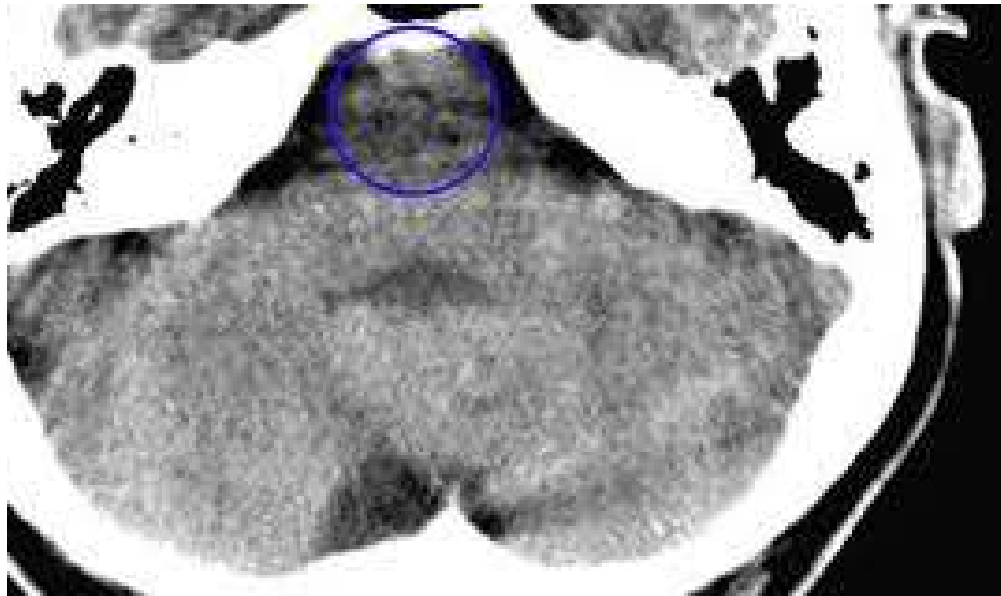
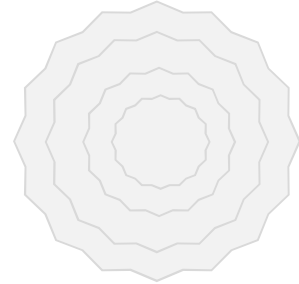
The cerebral changes in a brain relay, during a healing process (major points and phases) can be visualized through a brain CT.

Brain Relay Markings

Sharp, clear rings visible in the stress phase (conflict active)



Blurred, unclear rings visible in the regeneration phase (passive)



Chronic process: Sharp and blurred rings appear at the same time.

Brainlayer – Conflict theme

Brain Stem -

Survival

Cerebellum -

Protection

Cerebral Medulla -

Self-Devaluation

Cerebral Cortex -

Territory/Social

Brainlayer – Cell growth or Cell reduction

Brain Stem - C+

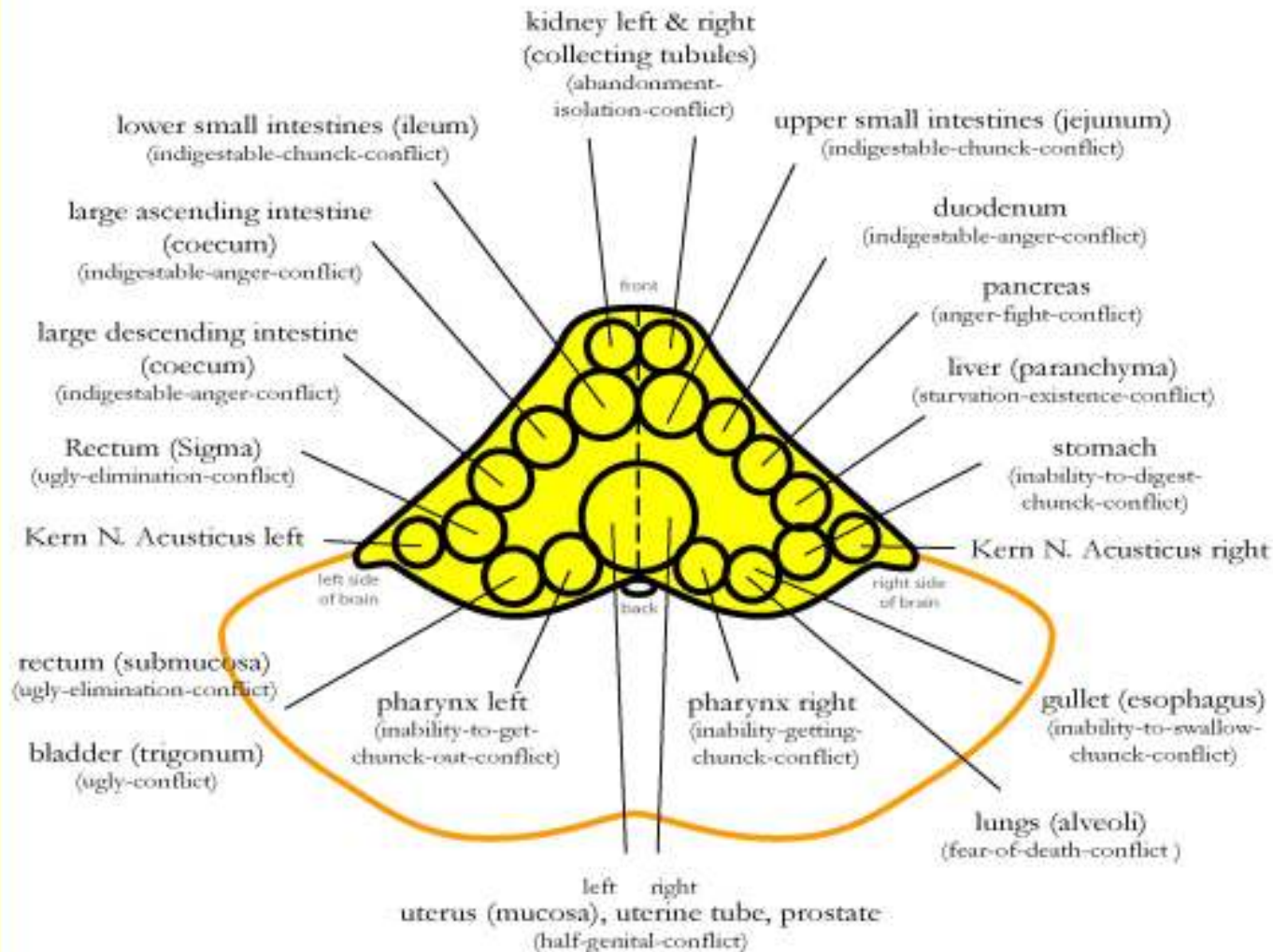
Cerebellum - C+

Cerebral Medulla - C-

Cerebral Cortex - C-

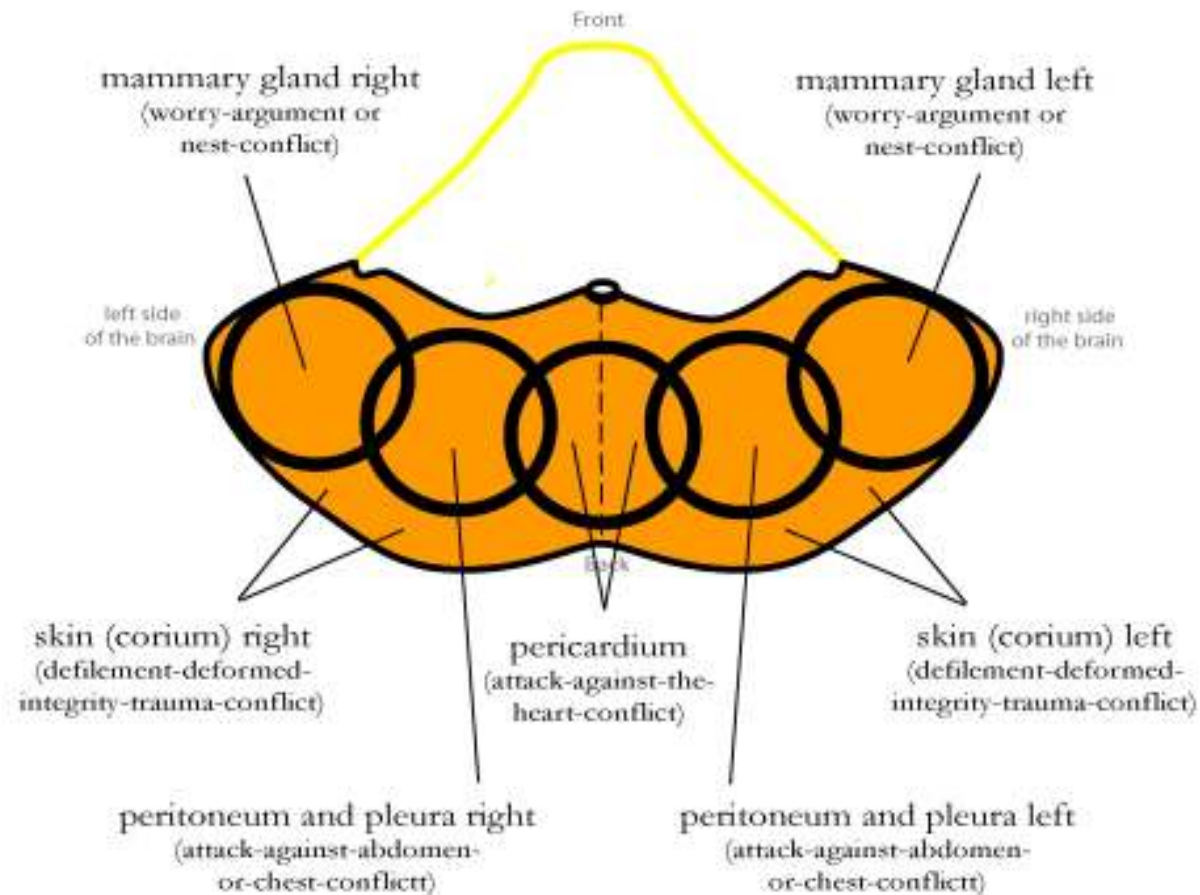
Brain Relays: Brain Stem

The connections between brain stem and organ are not crossed. Right-Left handedness is not relevant.



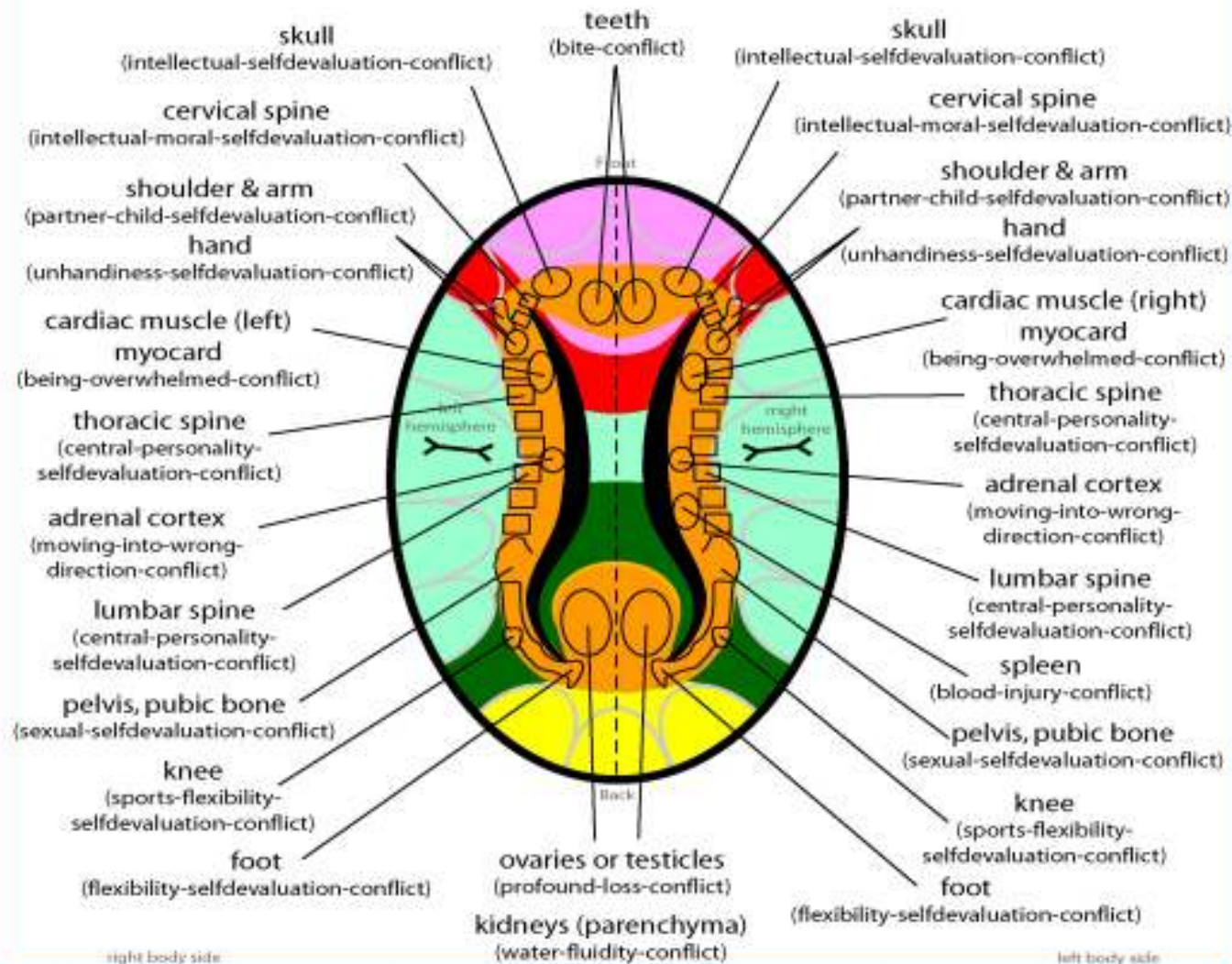
Brain Relays: Cerebellum

The connections between cerebellum and organ are crossed, meaning the left side of the body is represented in the right side of the brain and visa versa. Right-Left handedness is relevant.



Brain relays: Cerebral Medulla

The connections between cerebral medulla and organ are crossed (except myocard and kidneys), meaning the left side of the body is represented in the right side of the brain and visa versa. Right-Left handedness is relevant.



Brain relays: Cerebral Cortex

The connections between cerebral cortex and organ are crossed, meaning the left side of the body is represented in the right side of the brain and visa versa. Right-Left handedness is relevant.

The 1st conflict always hits the **men on right** and **woman on left** and the 2nd conflict the opposite hemisphere. Left handed woman or men have same conflict content but it hits the other hemisphere.

